

# Nursing Professional Practice Model

In 2022, a group of AdventHealth nurses and nurse leaders from across our system gathered to create the AdventHealth professional practice model (PPM), a framework that aligns structure, processes, vision and service standards to our nursing practice. The visual guides the philosophy, culture and decision-making of AdventHealth nurses, and communicates how work at the unit level drives quality, safety and evidenced-based practices — leading to excellence in care delivery and optimal outcomes.

## PHILOSOPHY

### Whole-Person Care

The heart-shaped model represents our commitment to care for every patient as if they were our own loved ones. At the center, we are guided by our vision of whole-person care that seeks to heal the body, ease the mind and uplift the spirit of every patient.

Patient and Family-Centered Care is our care delivery system and establishes the framework of how nurses provide care to our patients and families. It is in the forefront of all nursing practice decisions at our organization. AdventHealth nurses advocate for patients and families across the care continuum by ensuring their voice is heard.

### Service Standards

AdventHealth nurses express our mission through our service standards – Keep Me Safe, Love Me, Make It Easy and Own It – as we connect to each other and our patients. We provide compassionate whole-person care by treating patients and families in all aspects – body, mind and spirit.



## Keep Me Safe

**Relationship-Based Collaboration:** Our nursing teams are built on AdventHealth's culture of family through positive relationships, trust, respect and smooth collaboration with peers and multidisciplinary teams. Not only do we have strong relationships within our facilities, but also in our surrounding communities.

**Research and Evidence-Based Practice:** By utilizing evidence-based practice, integrating the latest research and promoting ongoing clinical inquiry, nurses bring science to the bedside and drive quality outcomes and excellence. This focus allows nurses to provide safe patient care with positive outcomes.

## Own It

### Autonomy and Leadership:

Every nurse is a leader. Nurses are trusted and respected for their expertise and contributions to the care setting. AdventHealth supports nurses to practice at the top of their license, take accountability and demonstrate quality outcomes through evidenced-based practice and decision-making.

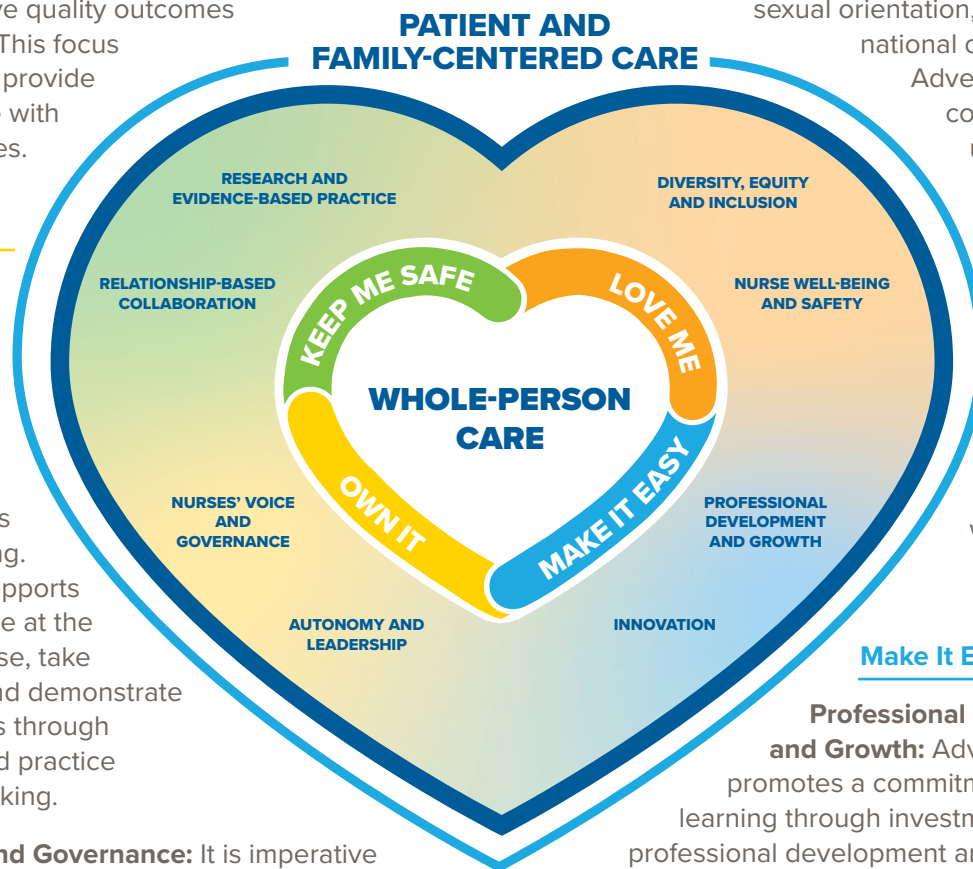
**Nurses' Voice and Governance:** It is imperative that nurses are known as leaders in our health care organization. AdventHealth nurses have a seat at the table, are engaged in committees, are directly involved in decision-making and are acknowledged for their impact.

## Love Me

**Nurse Well-Being and Safety:** AdventHealth is dedicated to nurturing and supporting the well-being of our nurses. This means protecting our nurses physically and psychologically as well as creating a healthy work environment by adding equipment, resources and training.

**Diversity, Equity and Inclusion:** We nurture a culture of belonging that is directly tied to our faith-based mission of compassionate care. We embrace the rich uniqueness of our nurses and of all individuals, inclusive of age, gender, race, ethnicity, disability, sexual orientation, education, national origin or religion.

AdventHealth is committed to understanding and addressing inequities in the communities that we serve. We want everyone to feel respected and valued for who they are.



## Make It Easy

### Professional Development and Growth:

AdventHealth promotes a commitment to lifelong learning through investment in nursing professional development and growth. We encourage learning new skills through professional educational programs, career pathways and competency unique to our nurses' practice and level across their career continuum.

**Innovation:** AdventHealth nurses embrace innovation every day, exceeding patient and family needs and solving problems at the bedside. Nurses use a creative, synergistic approach and integrate current technology into patient care.